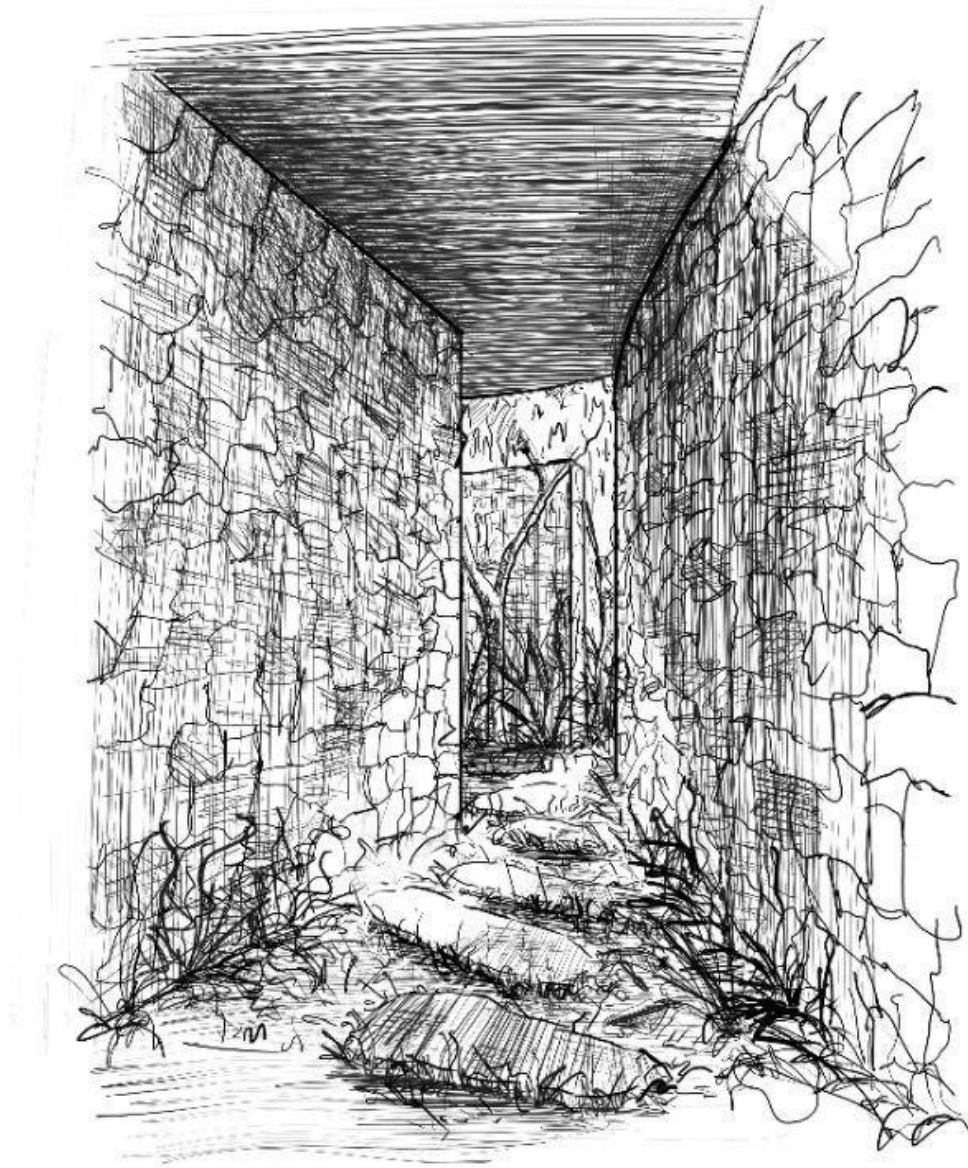


CASA SKY



CASA SKY

Casa Sky, "the house above the jungle" is a perfect fusion of tradition and modernity. Inspired by Mayan architecture and a spiritual connection with the heavens, it rises four levels above the tropical landscape, lifting life toward the sky. The name says it all: at its summit, a wellness space opens to the endless green of the jungle, welcoming you with the breeze and stillness only found among the treetops. Its **open design** allows air and light to flow freely through every level, offering a living experience in **harmony with nature** — where **luxury and tranquility rise**, quite literally, to new heights.

LOCATION

(RESEARCH)



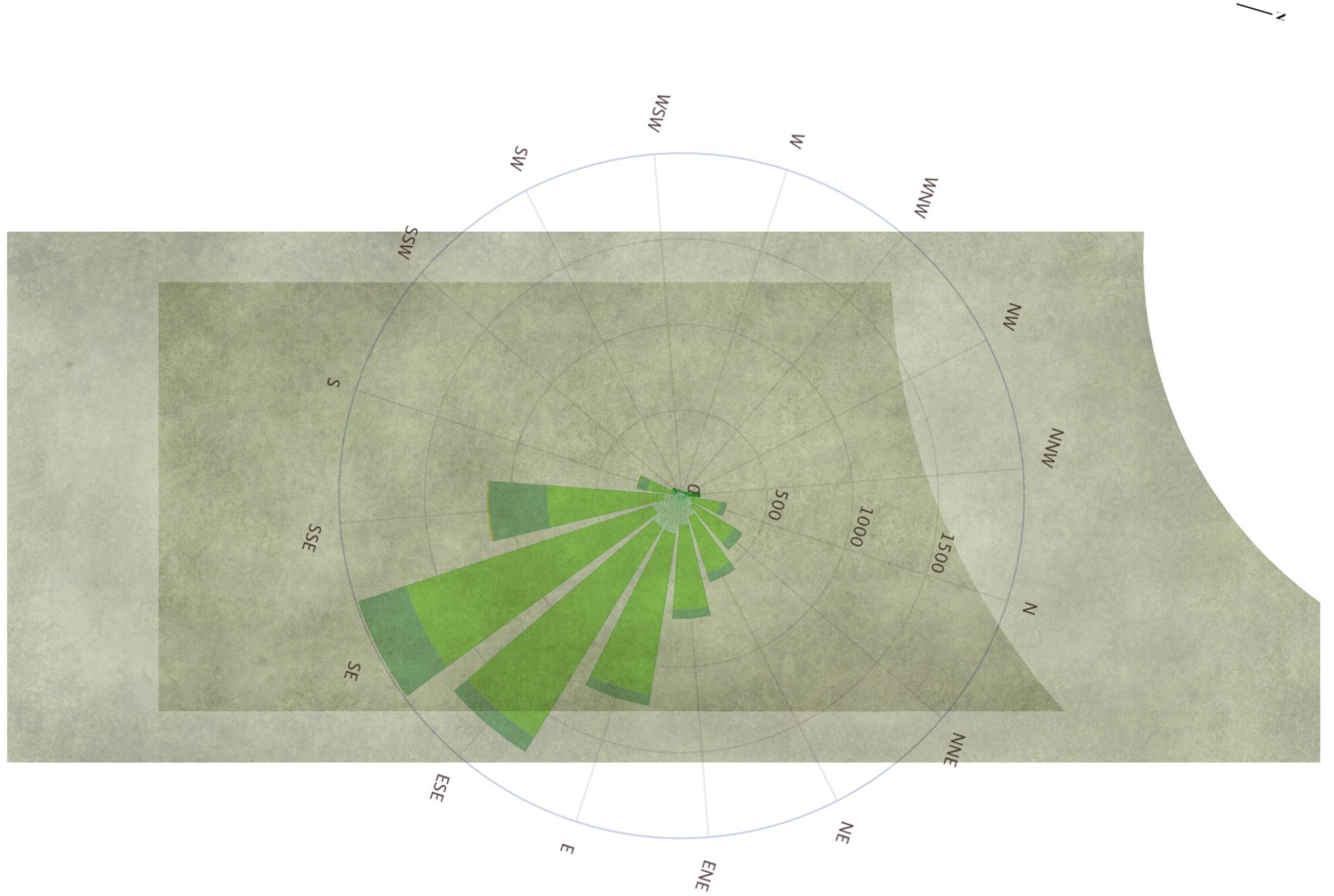




IMMEDIATE CONTEXT

(RESEARCH)





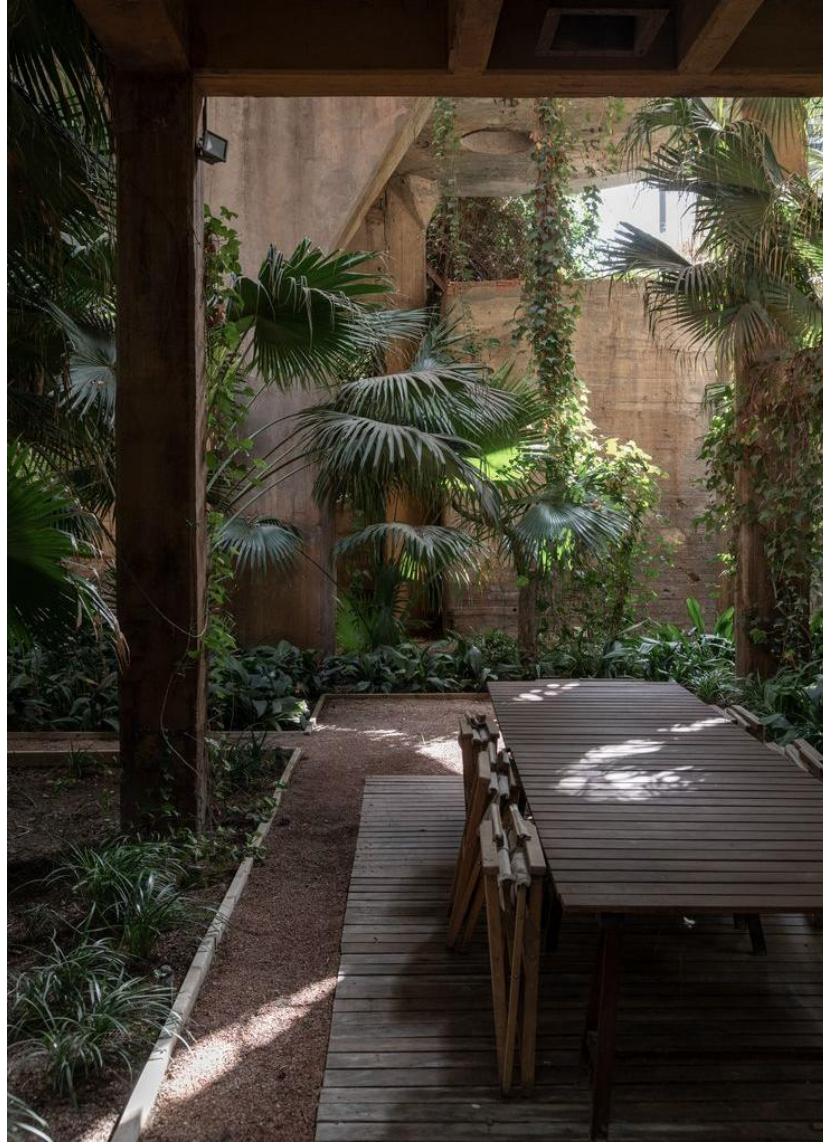
ANALYSIS/ WINDS < 2 km/h 2 - 5 km/h 5 - 10 km/h 10 - 20 km/h 20 - 30 km/h 30 - 40 km/h 40 - 50 km/h > 50 km/h

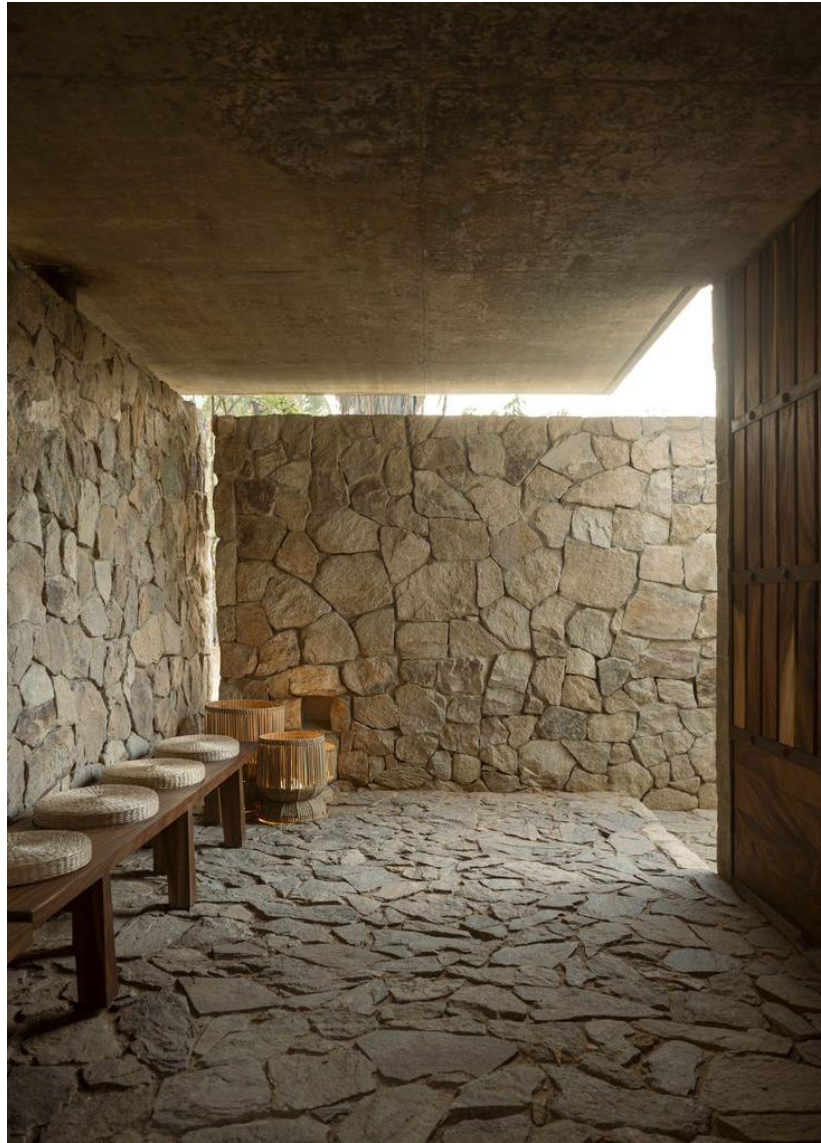
REFERENCES

(LOOK AND FEEL)



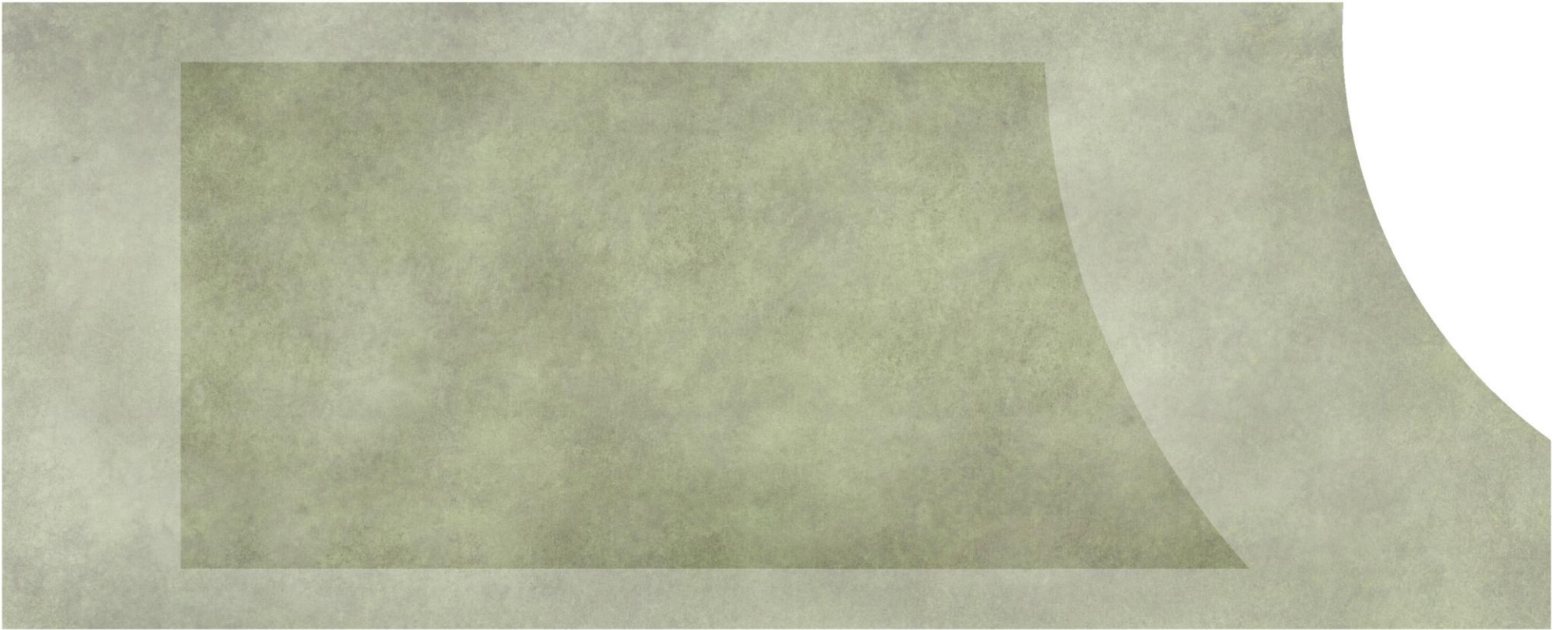




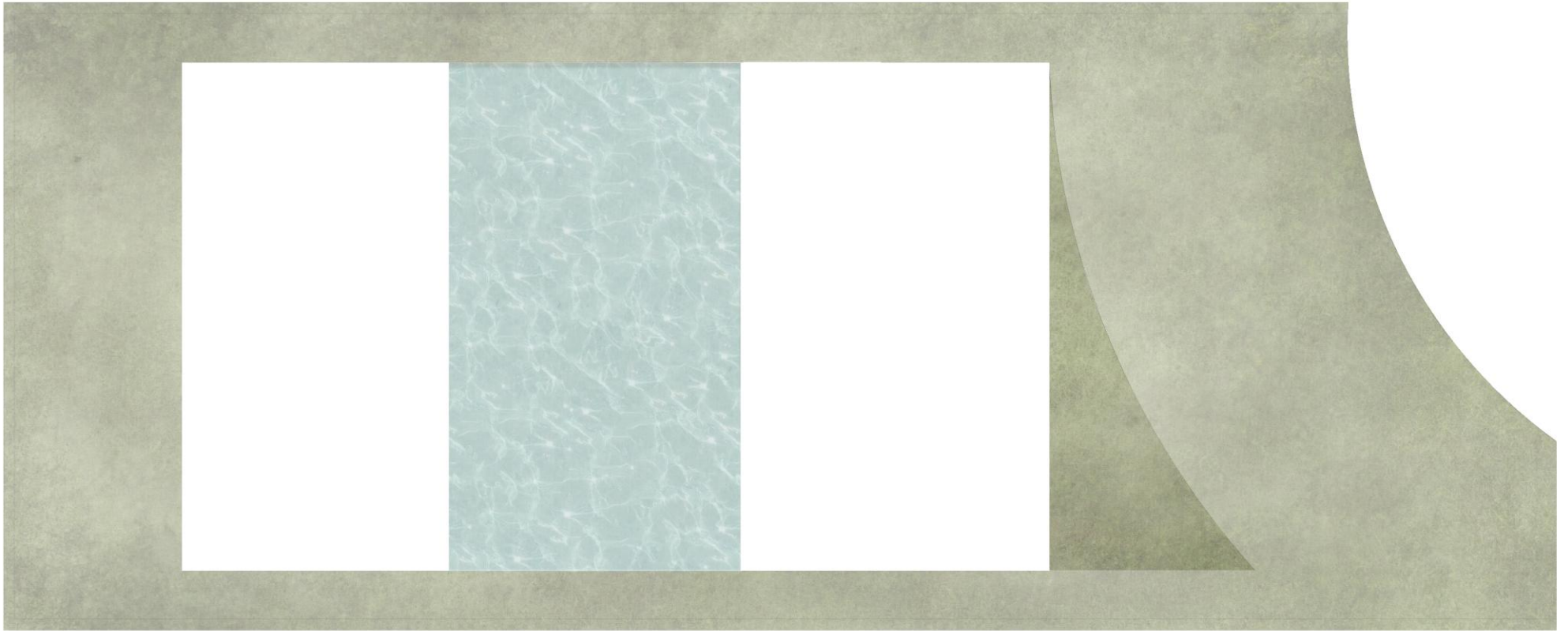


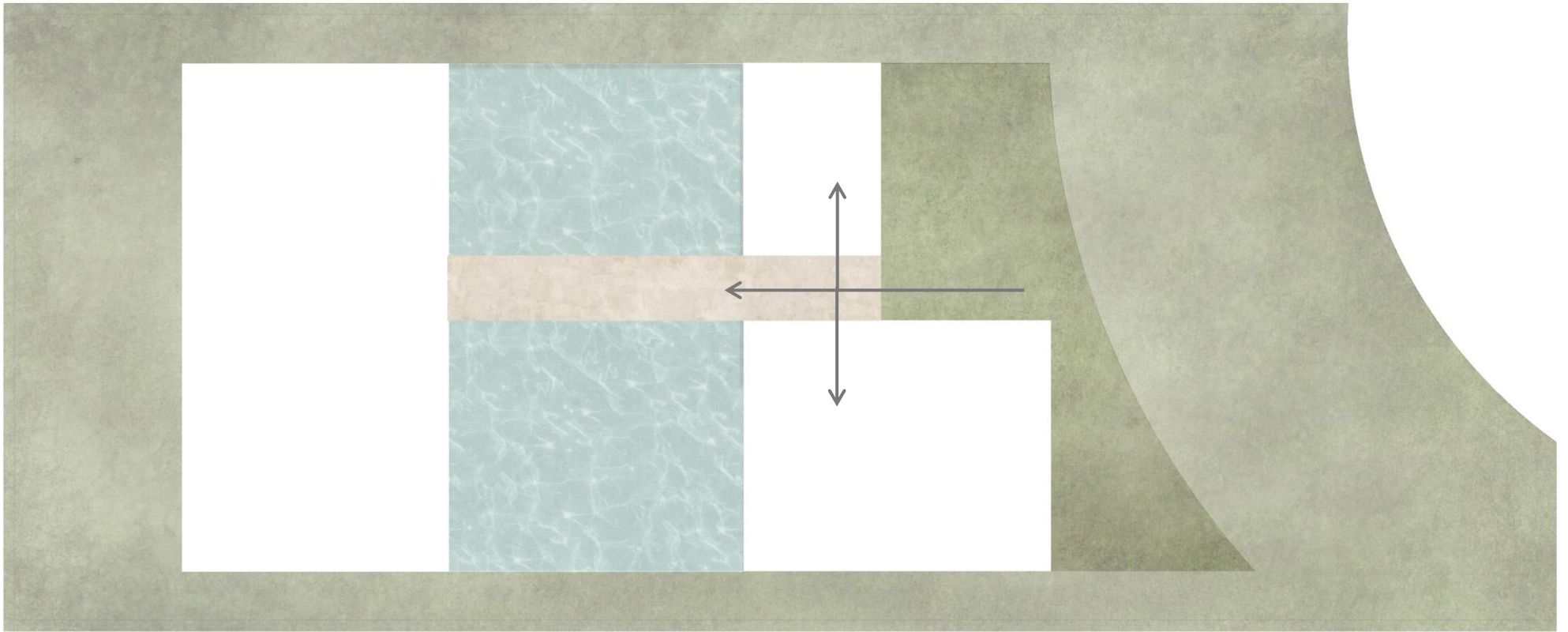
CONCEPTUAL PROCESS

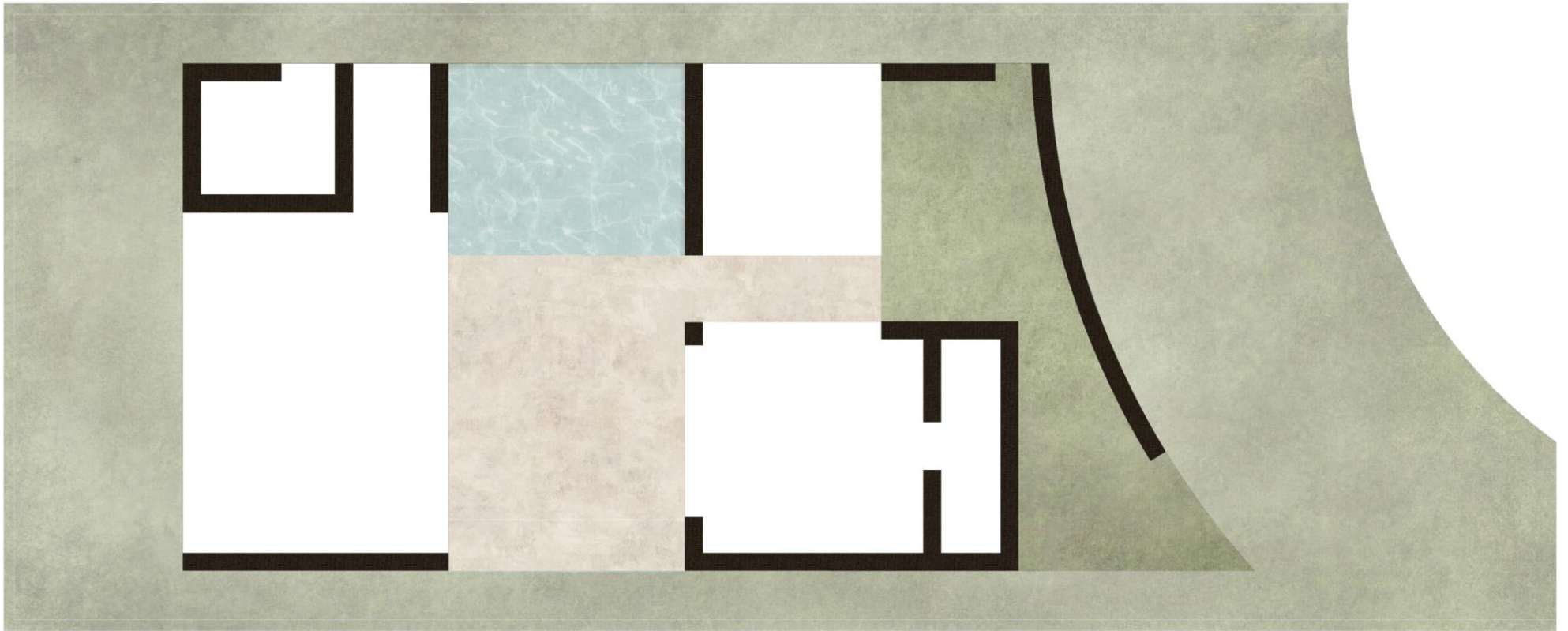
(DIAGRAMS)

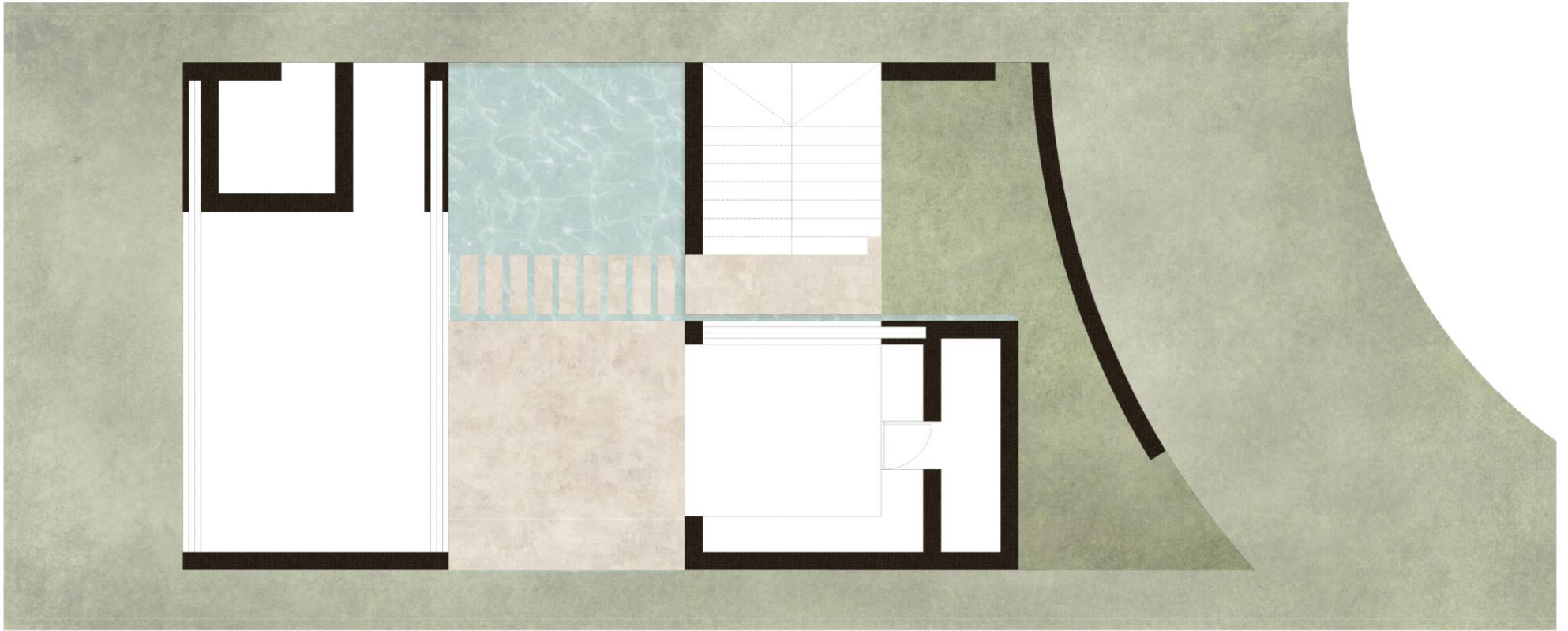










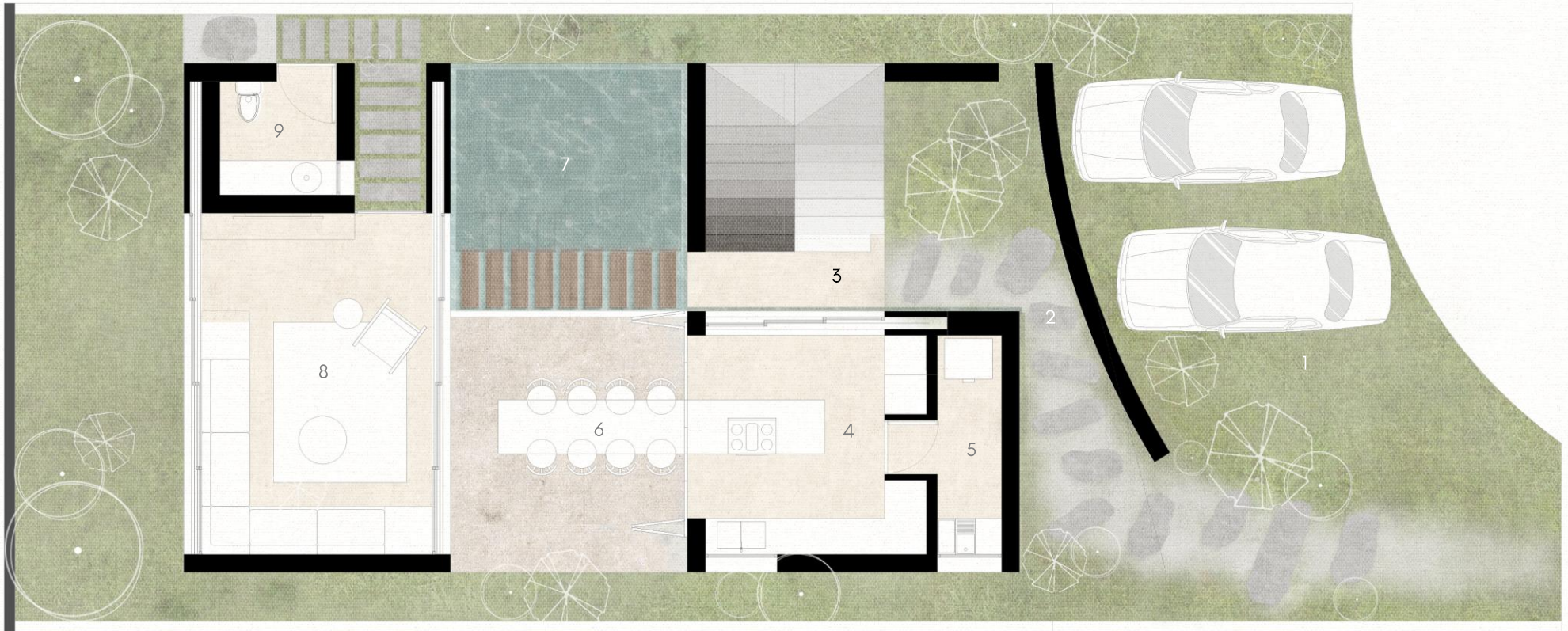


CASA SKY
(ARCHITECTURE)





CONCRETE / CHUKUM / STONE / WOOD



- 1. PARKING
- 2. MAIN ENTRANCE
- 3. STAIRS
- 4. KITCHEN
- 5. LAUNDRY
- 6. DINING

- 7. POOL
- 8. LIVING
- 9. BATHROOM

INTERIORS
COVERED SPACES AND OVERHANGS
EXTERIOR

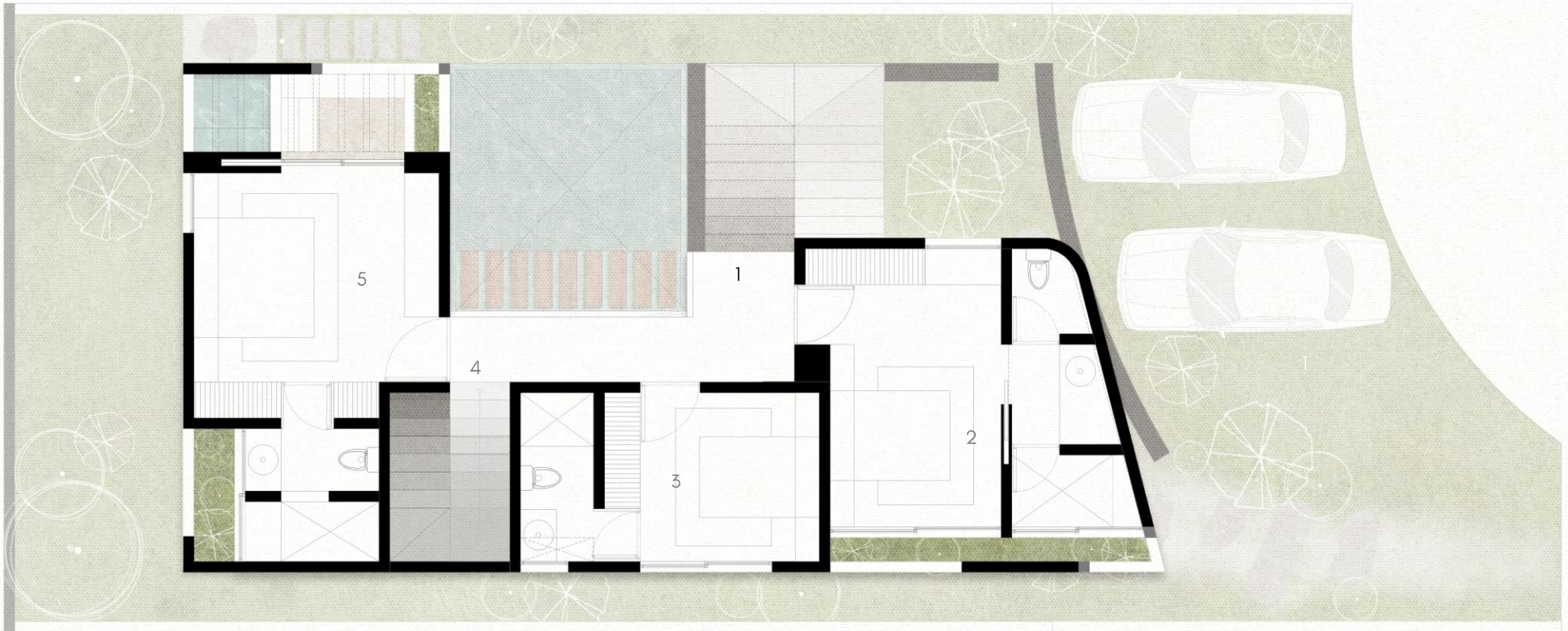
89.94 m²
15.31 m²
16.38 m²

968.10 ft²
164.79 ft²
176.31 ft²

GROUND FLOOR TOTAL

121.63 m²

1309.22 ft²



- 1. STAIRS TO GROUND FLOOR
- 2. BEDROOM 01
- 3. BEDROOM 02
- 4. STAIRS TO SECOND FLOOR
- 5. MASTER BEDROOM 01

INTERIORS
COVERED SPACES AND OVERHANGS

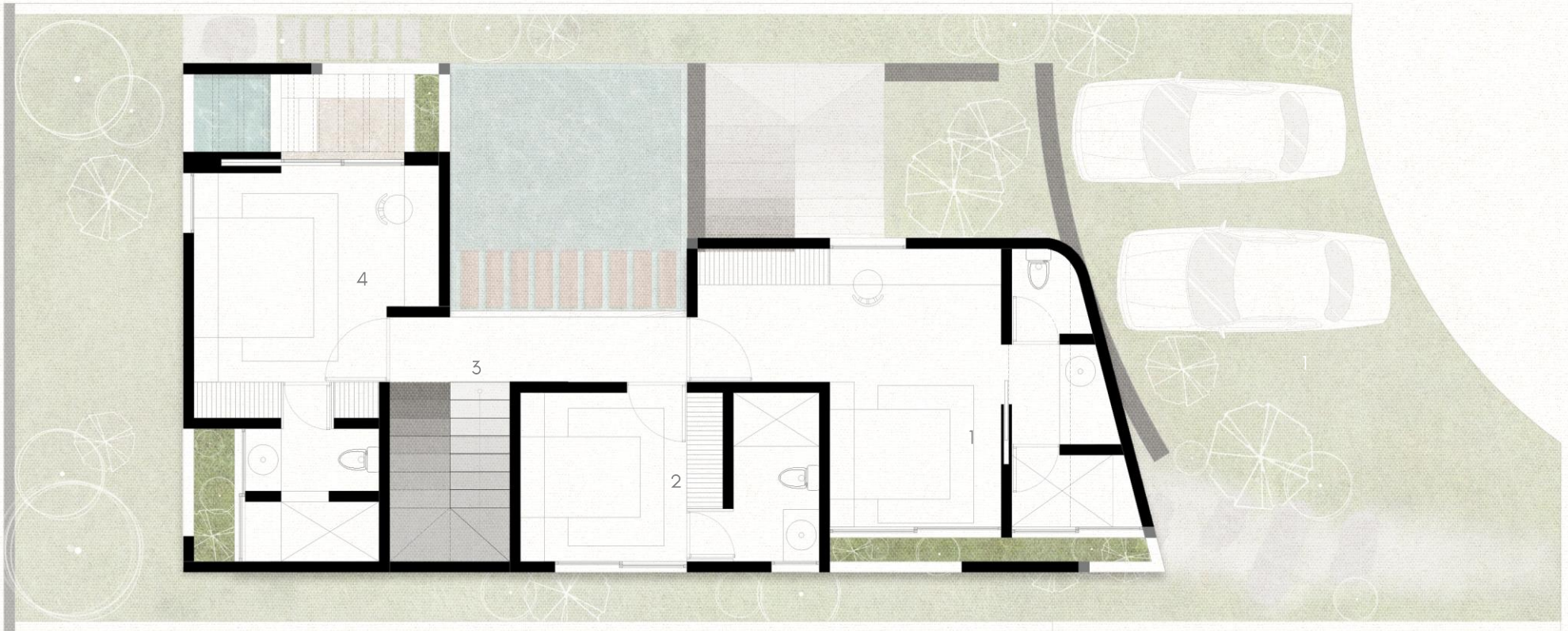
70.77 m²
17.58 m²

761.76 ft²
189.22 ft²

FIRST FLOOR TOTAL

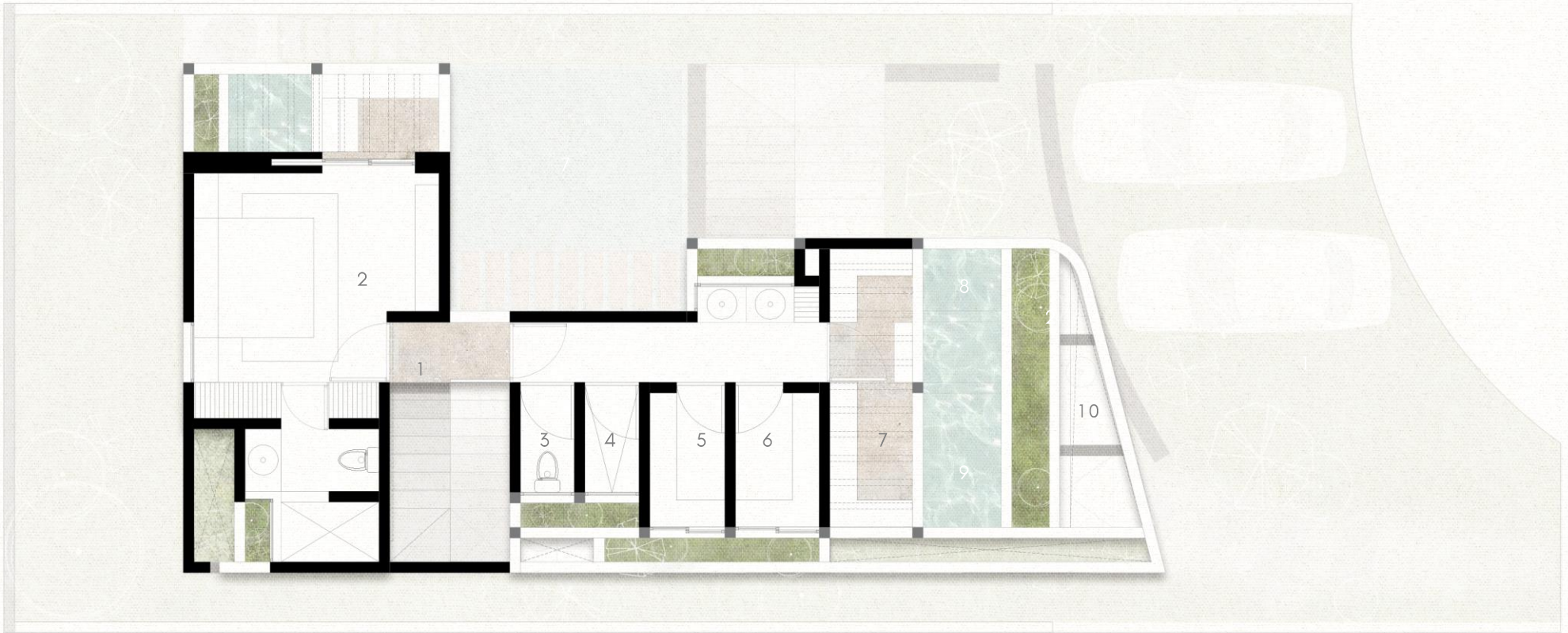
88.35 m²

950.99 ft²



- 1. BEDROOM 03
- 2. BEDROOM 04
- 3. ESCALERAS A ROOFTOP
- 4. MASTER BEDROOM 02

INTERIORS	72.33 m ²	789.32 ft ²
COVERED SPACES AND OVERHANGS	21.16 m ²	227.76 ft ²
FIRST FLOOR TOTAL	94.49 m²	1017.08 ft²



- 1. STAIRS TO SECOND FLOOR
- 2. MASTER BEDROOM 03
- 3. WC
- 4. SHOWER
- 5. STEAM ROOM
- 6. SAUNA

- 7. TERRACE
- 8. COLD PLUNGE
- 9. HOT JACUZZI
- 10. SKYLIGHT

ROOF TOP

INTERIORS
COVERED SPACES AND OVERHANGS

48.55 m2
26.77 m2

522.58 ft²
288.14 ft²

ROOF TOP TOTAL

75.32 m2

810.734 ft²

GROUND FLOOR

121.63 m2

1,309.22 ft²

FIRST FLOOR

88.35 m2

950.99 ft²

SECOND FLOOR

94.49 m2

1,017.08 ft²

ROOF TOP

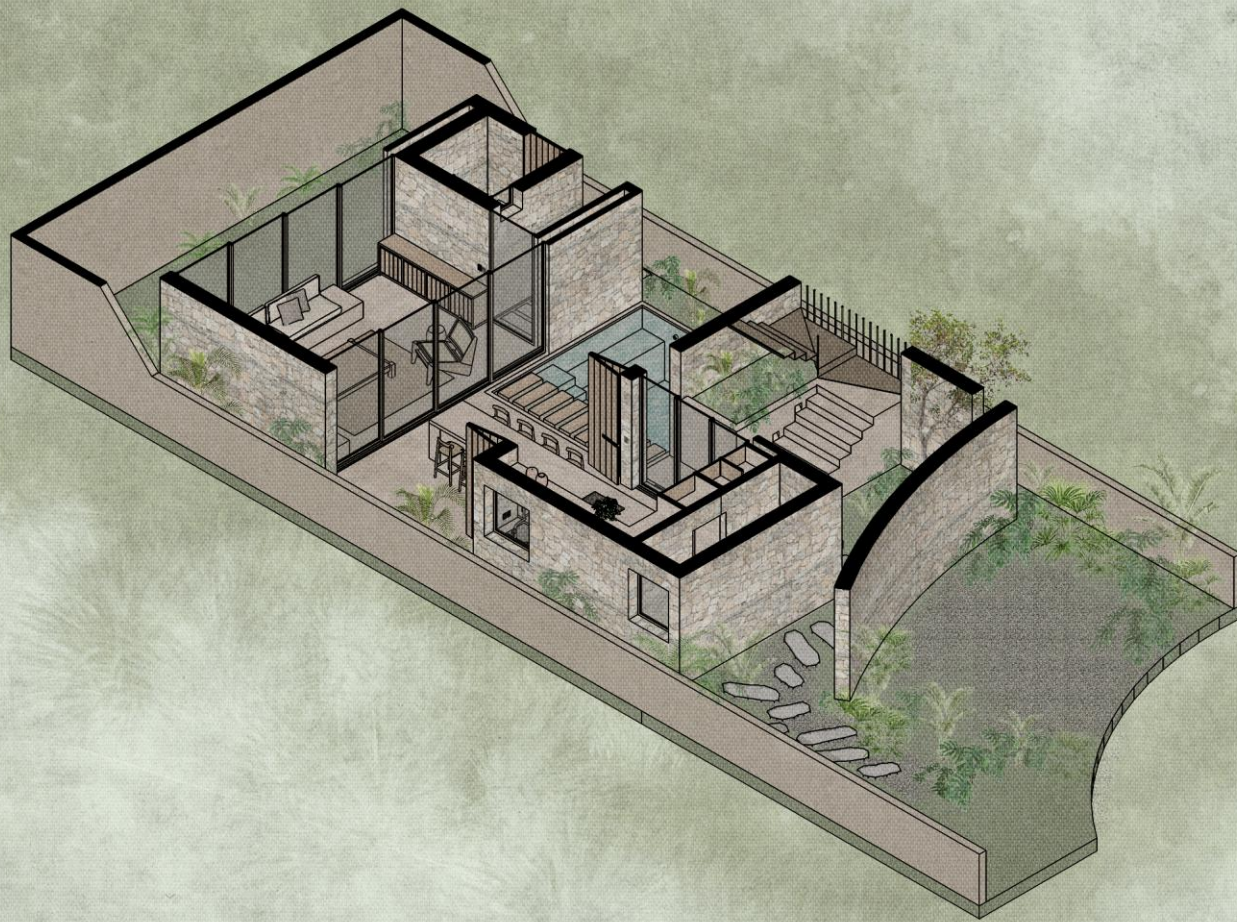
75.32 m2

810.73 ft²

TOTAL HOUSE

379.79 m2

4,088.02 ft²

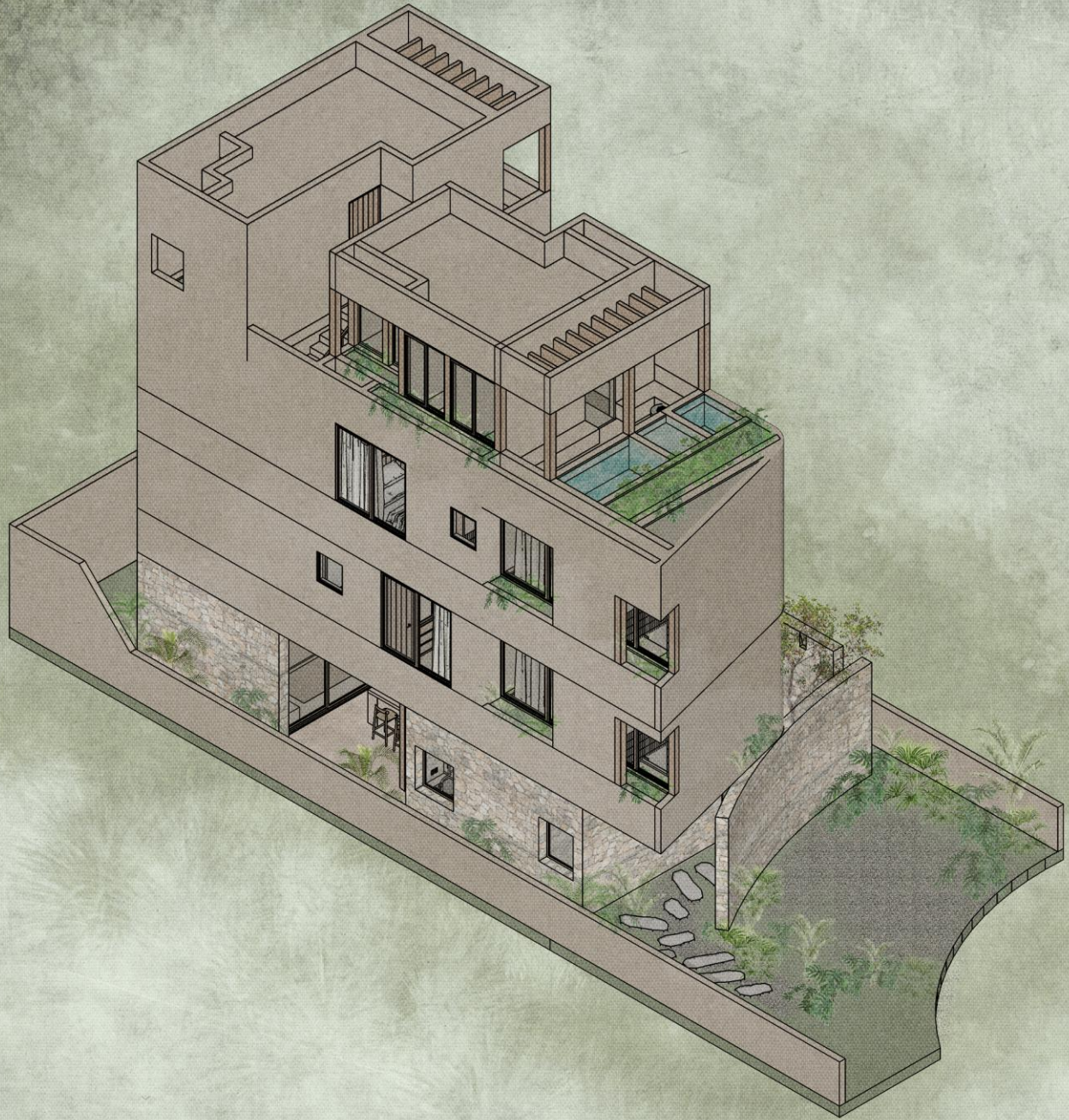


GROUND FLOOR











MAIN ENTRANCE











MASTER BEDROOM





BEDROOM 01 BATHROOM



ROOFTOP - COLD PLUNGE & JACUZZI





POOL VIEW TOWARD THE BOUNDARY WALL



AERIAL VIEW

V-
TALLER