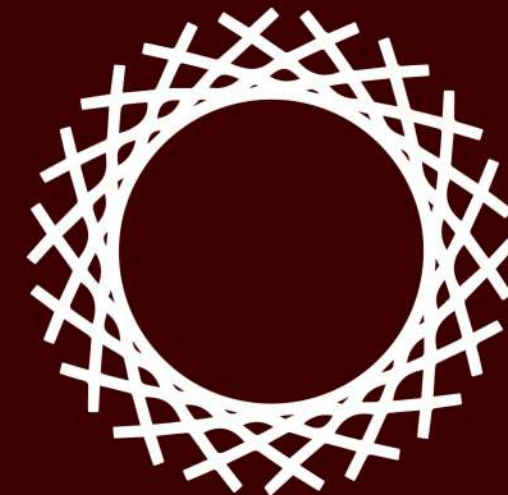
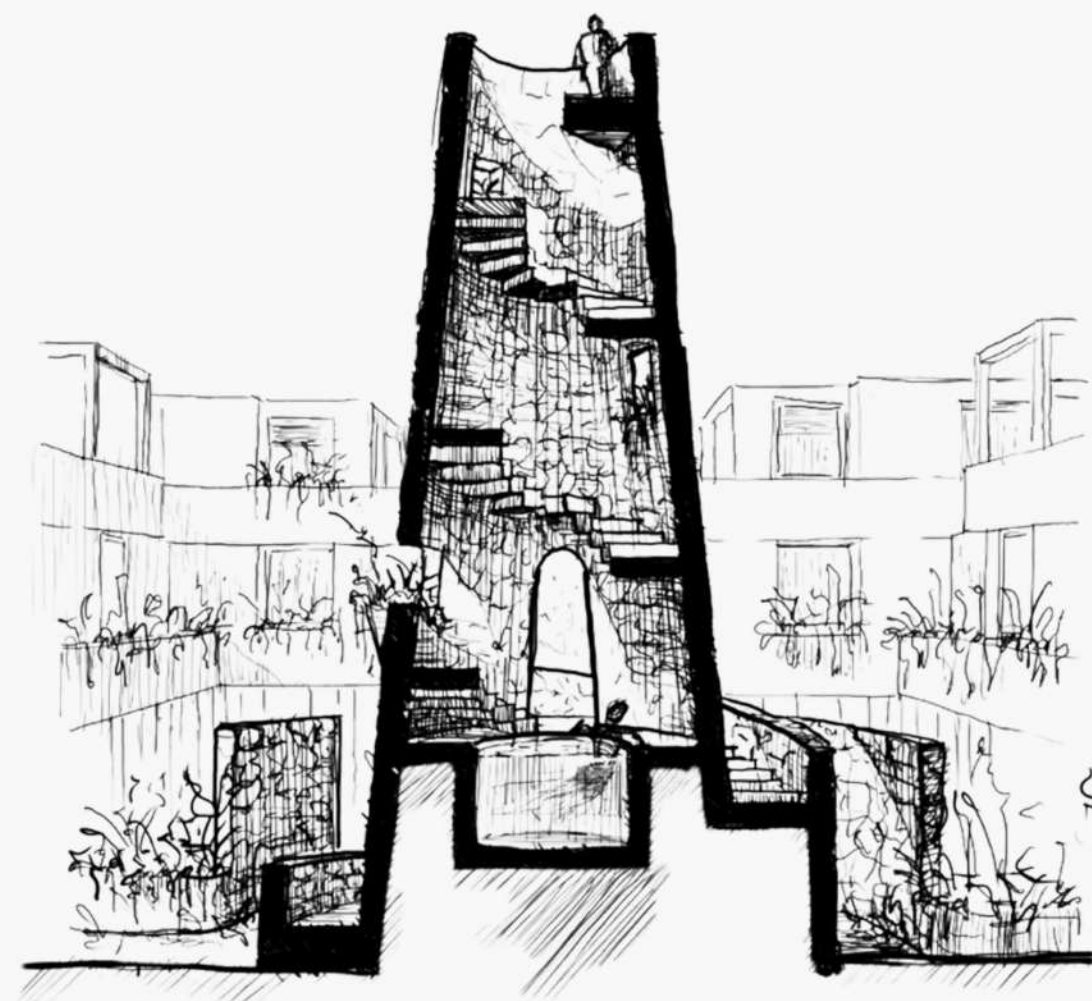
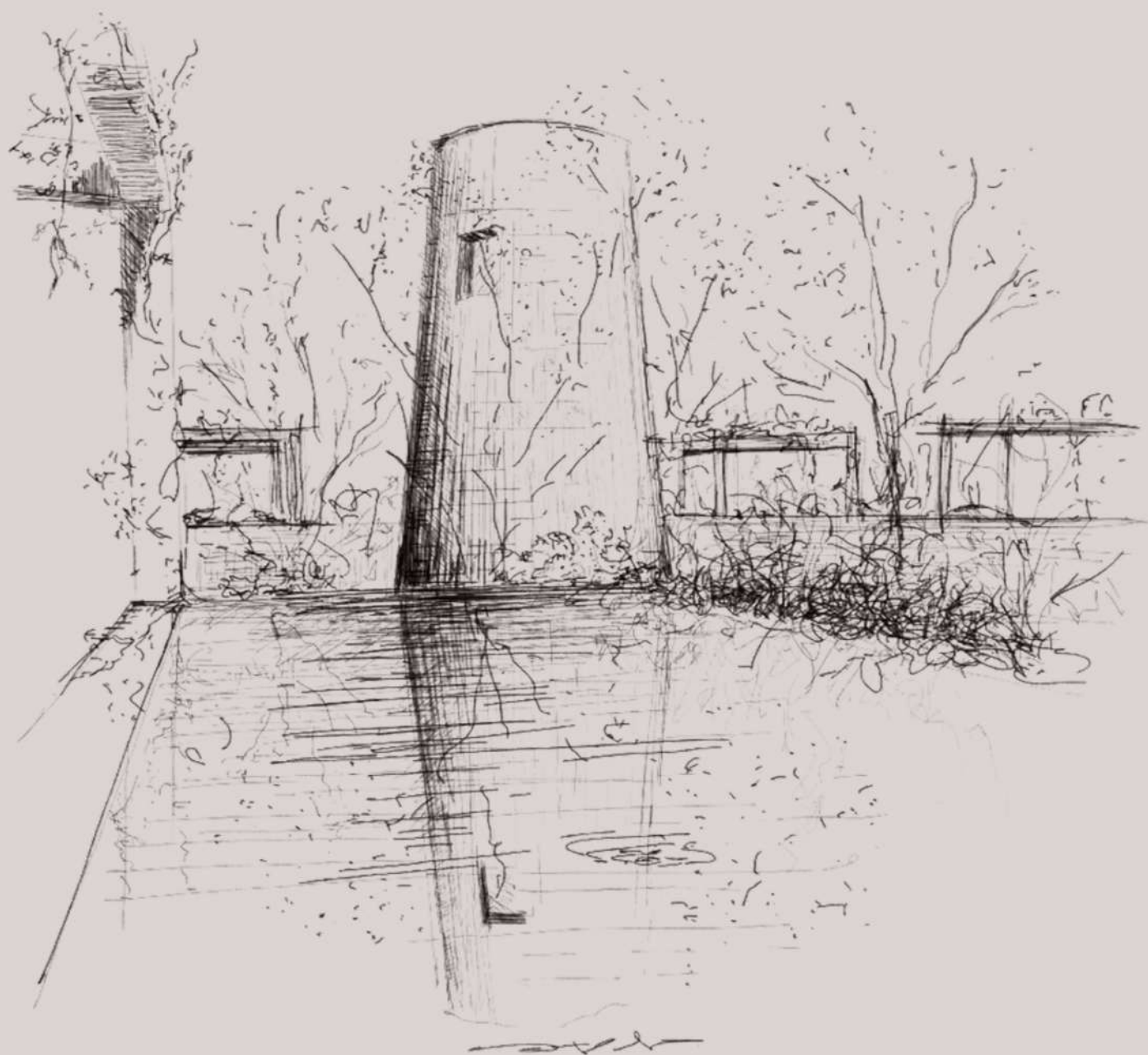


**DECLUN** CONCEPTS

# INKU RESIDENCES

NEST : NIDO : INKU



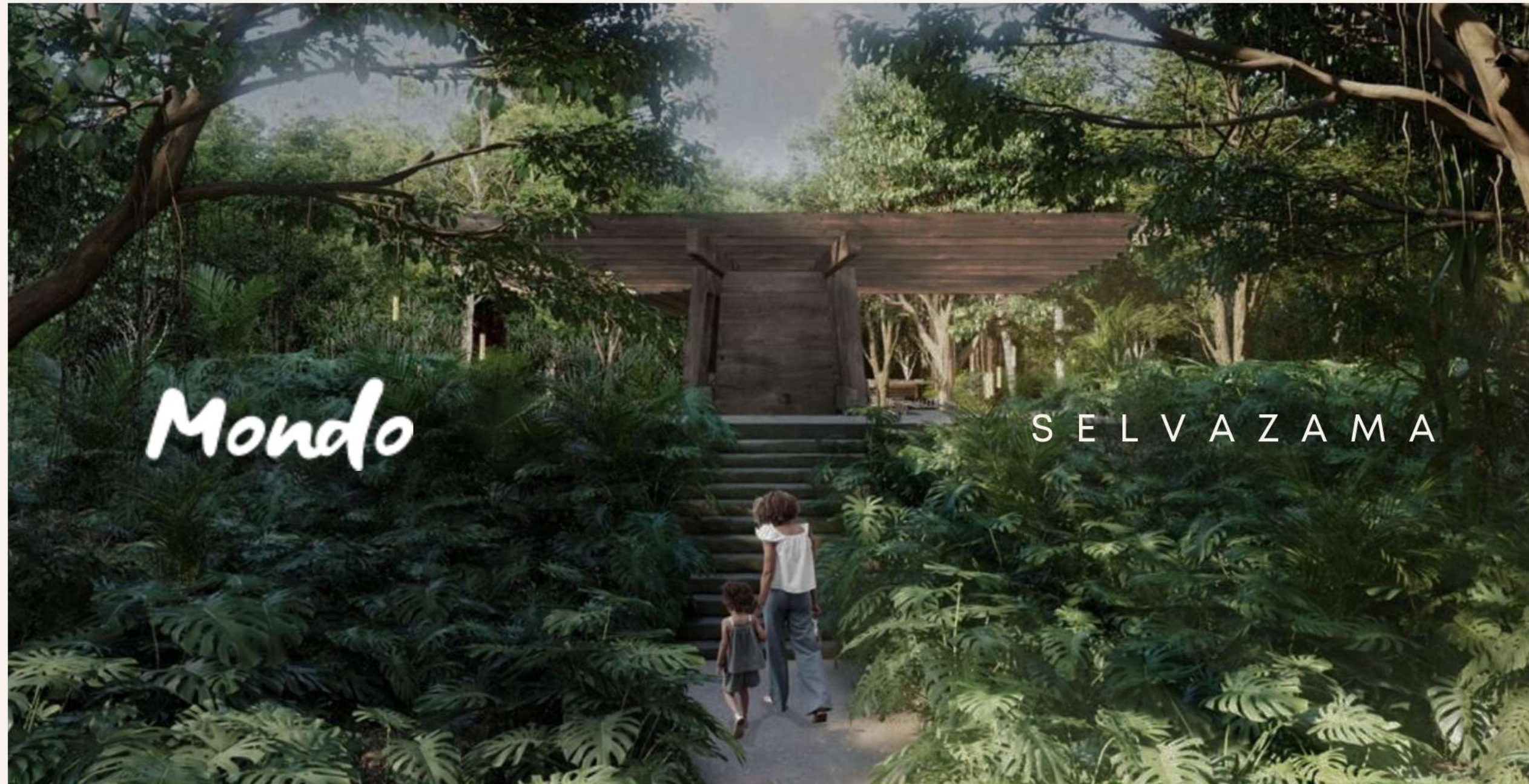


**DAVID**  
**CONCEPTS**

**V-**  
TALLER

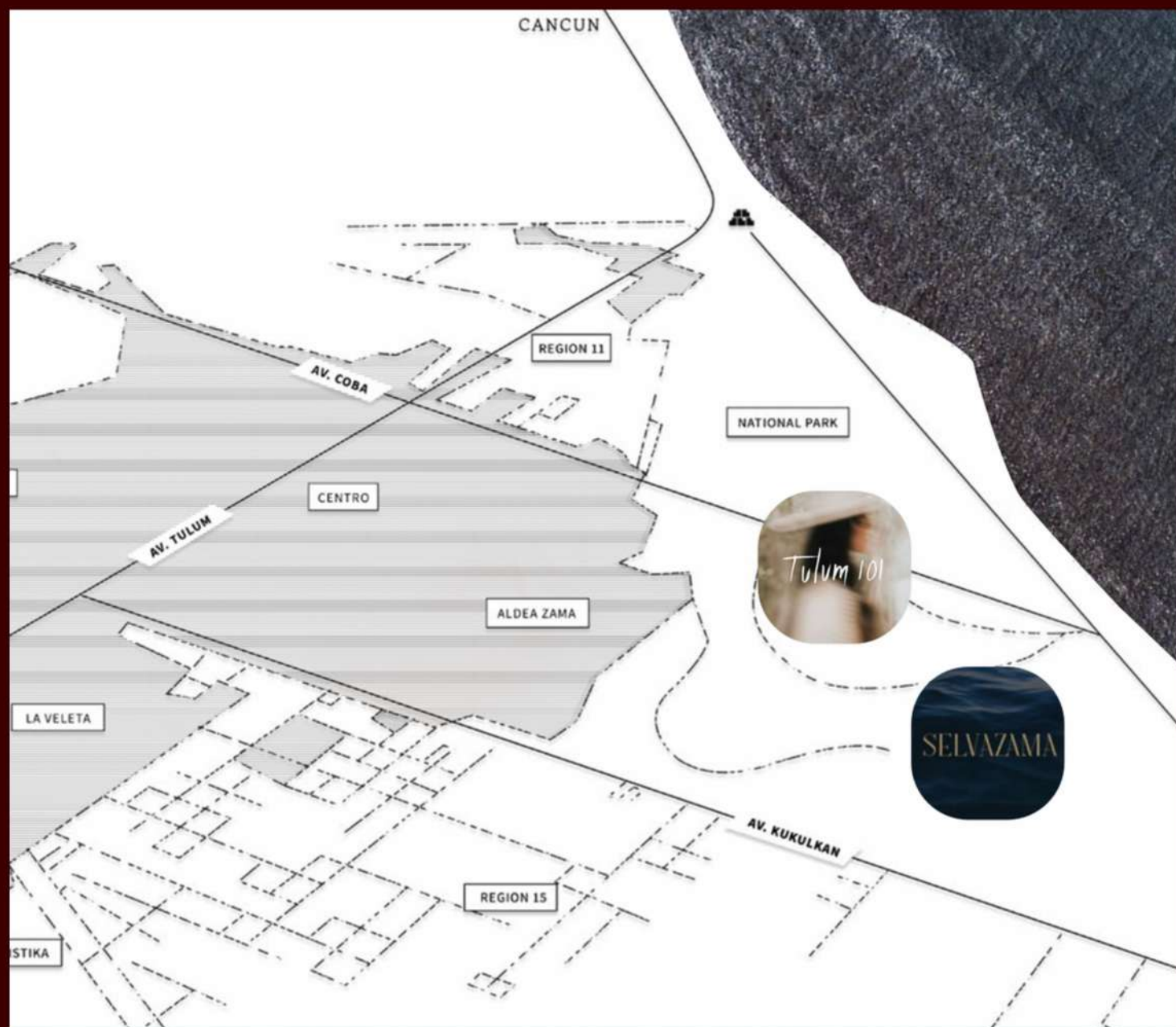


## LOCATION



PRIVATE  
COZY  
LUXURIOUS  
NATURAL  
SAFE  
MODERN  
SUSTAINABLE  
CHIC  
BREEZES  
RAINS  
SUN  
SMILES  
SERENITY  
JUNGLE  
CULINARY  
HEALING





## SELVAZAMA IS THE MOST EXCLUSIVE, NATURE-ORIENTED COMMUNITY IN THE REGION

Immerse yourself in 500 acres of premium real estate, fully urbanized with essential infrastructure such as water, electricity, drainage, and fiber optics, as well as meticulously designed concrete pathways and bike lanes, making it ideal for residential, hotel, and commercial projects.

With our strategic location within Tulum and access to the coastline at the entrance from Coba Avenue-the main avenue connecting downtown to Tulum's hotel zone-Selvazama guarantees the highest appreciation value in the region. Our master plan includes roads with access to the main avenues, setting the stage for unparalleled growth and prosperity







GROW WITH THE JUNGLE



*Mondo*

SELVAZAMA

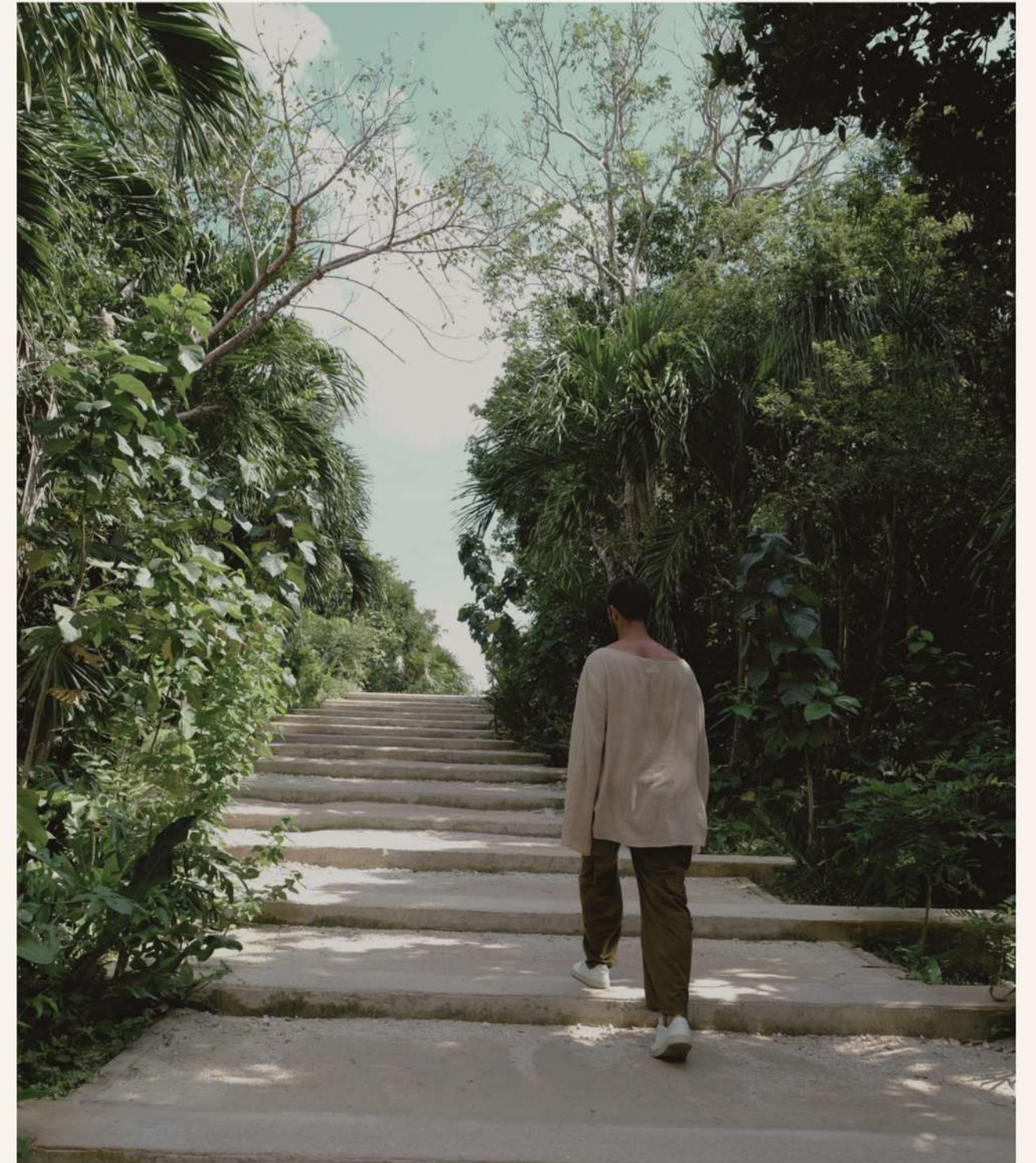
At Selvazama, we redefine luxury living and investment opportunities with our carefully curated multifamily, single-family, mixed-use, and macro lots, located within our 500-acre master plan-the most exclusive development in Tulum. Backed by our extensive experience and proven track record, we strive to give our clients lucrative returns on their investments.





## WALK TO THE BEACH IN 10 MINUTES

Tulum has experienced a significant increase in land value, with an average annual appreciation rate of over 8% in recent years. This remarkable growth has been further enhanced by innovative projects led by Zamá Desarrollos. Their flagship development, Aldea Zamá, has played a key role in driving this upward trend, setting new standards for luxury living and sustainable development in the area. By investing in Selvazama, you align yourself with a legacy of visionary development and capitalize on Tulum's booming real estate market.







## OUR NEIGHBORS



MAYAN TRAIN - JAGUAR NATIONAL PARK



FAENA DISTRICT



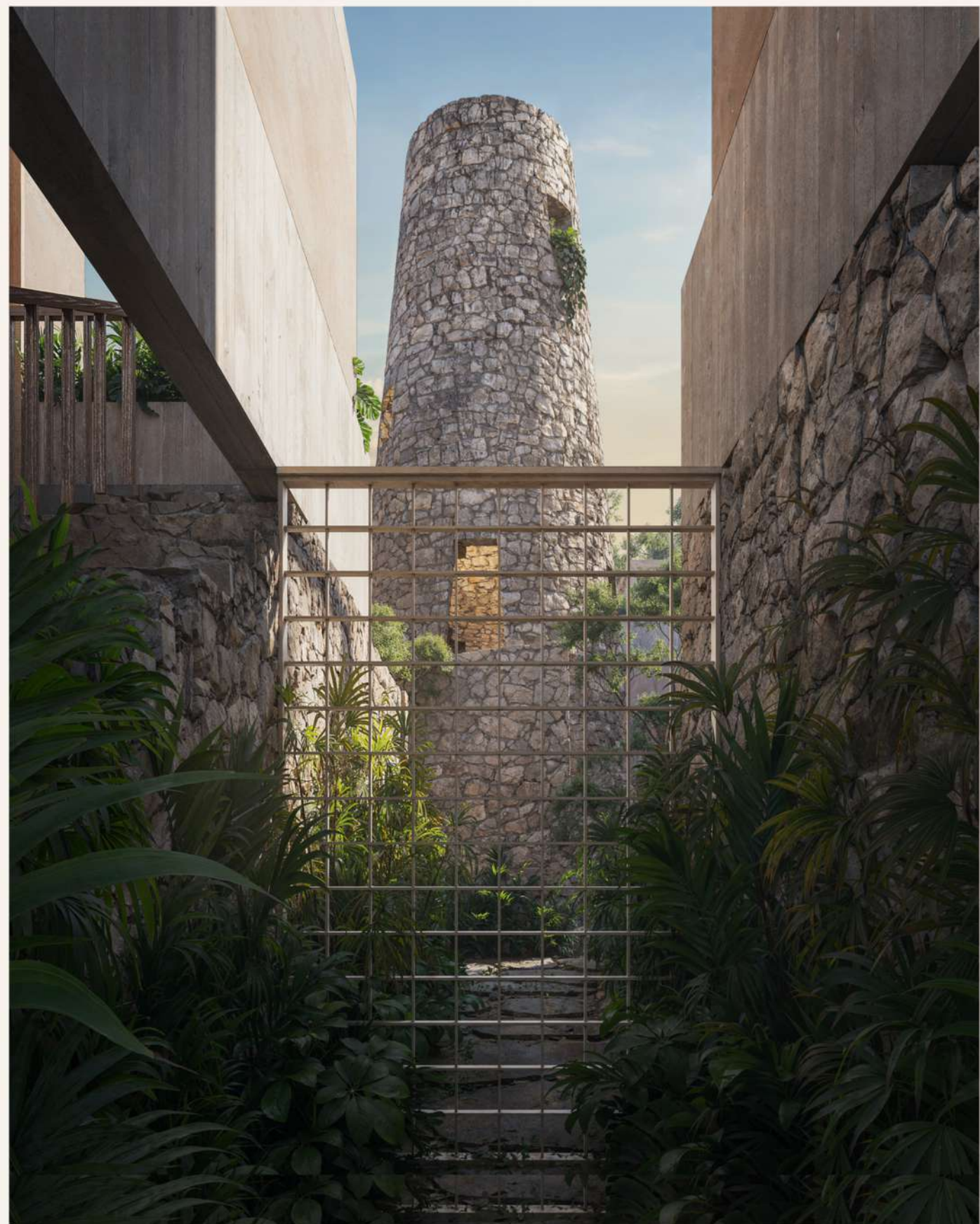
TULUM 101





FRONT FACADE





**MAIN ENTRANCE**



**POOL / TERRACE**





MAIN ENTRANCE

**DECLUD** CONCEPTS





POOL / TERRACE

**DECLUN** CONCEPTS





CENTRAL LOOKOUT / WELLNESS TOWER – SECTION VIEW





KITCHEN AND DINING ROOM





LIVING ROOM





MASTER BEDROOM – TYPOLOGY A





ROOF TOP – TYPOLOGY A





MASTER BEDROOM – TYPOLOGY B

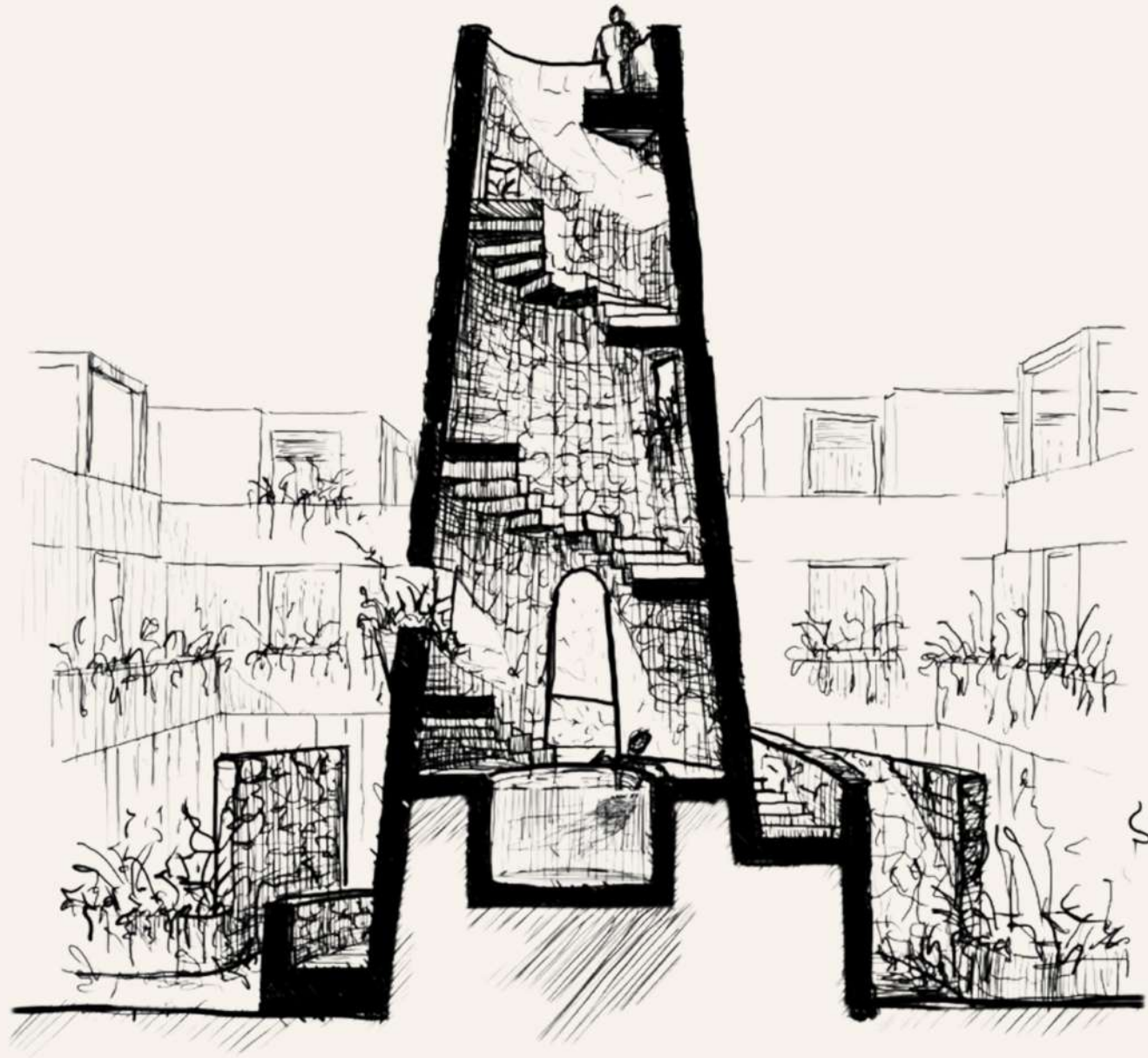




MASTER BEDROOM BATH – TYPOLOGY B

**DECLUN** CONCEPTS





**DECLUN** CONCEPTS



**T** TALLER





MATERIAL PALETTE

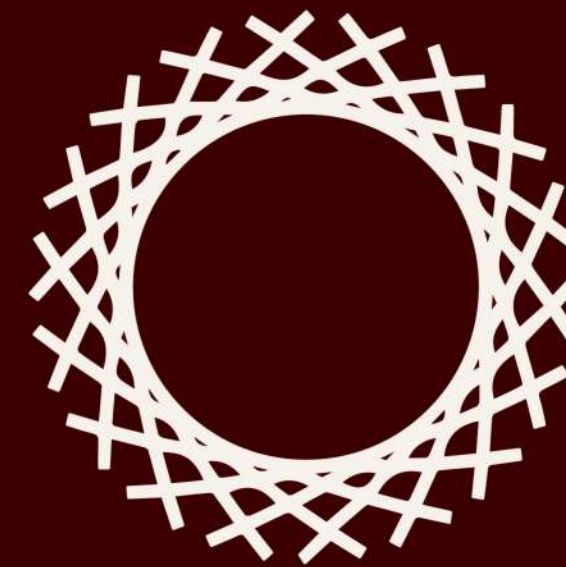


CONCRETE / CHUKUM / NATURAL STONE / WOOD / STEEL



2,723 TOTAL SQFT  
4 EXCLUSIVE RESIDENCES

[SEE FLOOR PLANS](#)



INKU RESIDENCES



IN DEELUM OUR PRIORITY  
IS TO BUILD HOMES THAT  
ELEVATE THE LIVES OF THE  
PEOPLE WHO CHOOSE TO  
LIVE IN THEM.

[SEE PRICE LIST](#)



WE LOVE SEEING  
YOU SMILE

DEELUM





## PERSONALIZED CONCIERGE SERVICE **24 HOURS**

CAR RENTAL IN RIVIERA MAYA  
LUXURY YACHT EXPERIENCES  
BACHELORETTE PARTY EXPERIENCES  
PERSONAL SERVICES  
PRIVATE DINNERS AND EVENTS  
PRIVATE SERVICES



[LEARN MORE](#)



CREATE  
MOMENTS WITH  
US