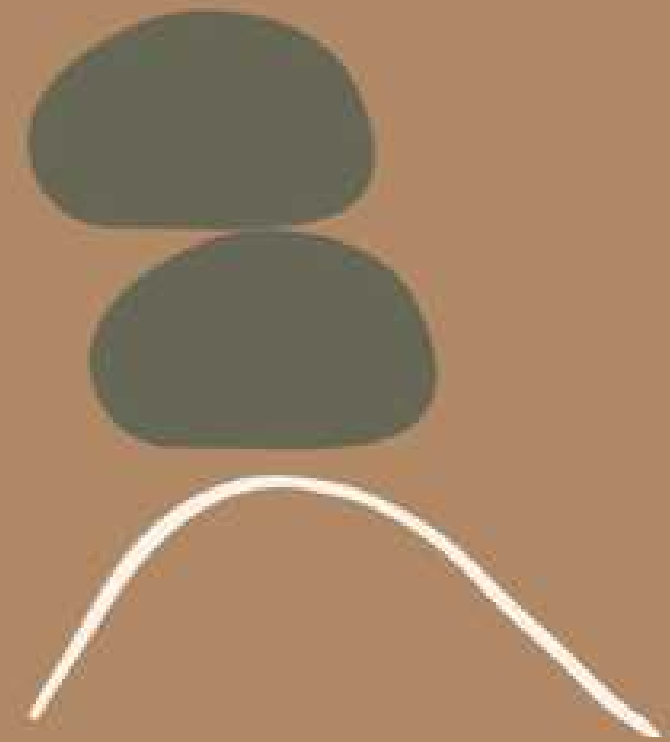


DECLUB CONCEPTS

CASA SKY

The rooftop spa oasis





MAIN ENTRANCE

DESIGN BY

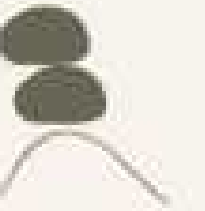


 TALLER

DARLON
CONCEPTS

T
TALLER

LOCATION

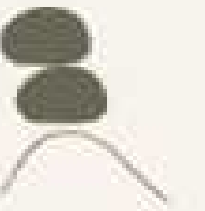


PEACEFUL
PRIVATE
COZY
LUXURIOUS
NATURAL
SAFE
MODERN
SUSTAINABLE
CHIC
BREEZES
RAINS
SUN
SMILES
SERENITY
JUNGLE
CULINARY
HEALING



MIRADOR TULUM: THE CLOSEST DEVELOPMENT TO THE ANCIENT MAYA RUINS

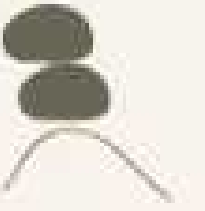
- **Stunning Views:** The viewpoint provides an unparalleled perspective of the coastline, with the gentle sea breeze and the sound of waves creating a tranquil, inviting atmosphere. It's particularly popular during sunrise and sunset, when the lighting is ideal for photography.
- **Cultural and Historical Proximity:** Mirador Tulum is located near the ancient Tulum ruins, once a thriving Mayan city. Visitors can easily combine their scenic experience with a tour of this significant archaeological site, adding depth to their visit.
- **New Beach Access:** Recent improvements include a newly constructed, eco-friendly beach access point. This pathway, made from locally sourced materials, features shaded rest areas, multilingual signage, and wheelchair-friendly ramps, enhancing convenience and inclusivity for all visitors.
- **Sustainability:** The new access route incorporates solar-powered lighting and preserves native vegetation, reflecting Tulum's commitment to sustainability and the protection of local biodiversity.



MIRADOR TULUM

KELMAN

The area around Mirador Tulum now includes a small plaza designed for cultural events, providing opportunities to experience local art and traditions. This development supports both the local community and the evolving identity of Tulum as a destination that balances tourism with cultural and environmental stewardship. Mirador Tulum stands out as a must-visit destination for anyone wanting to experience the natural beauty, history, and vibrant culture of Tulum in one unforgettable location.



Walk to the beach in 10 minutes.

Recent improvements include a newly constructed, eco-friendly beach access point. This pathway, made from locally sourced materials, features shaded rest areas, multilingual signage, and wheelchair-friendly ramps, enhancing convenience and inclusivity for all visitors.

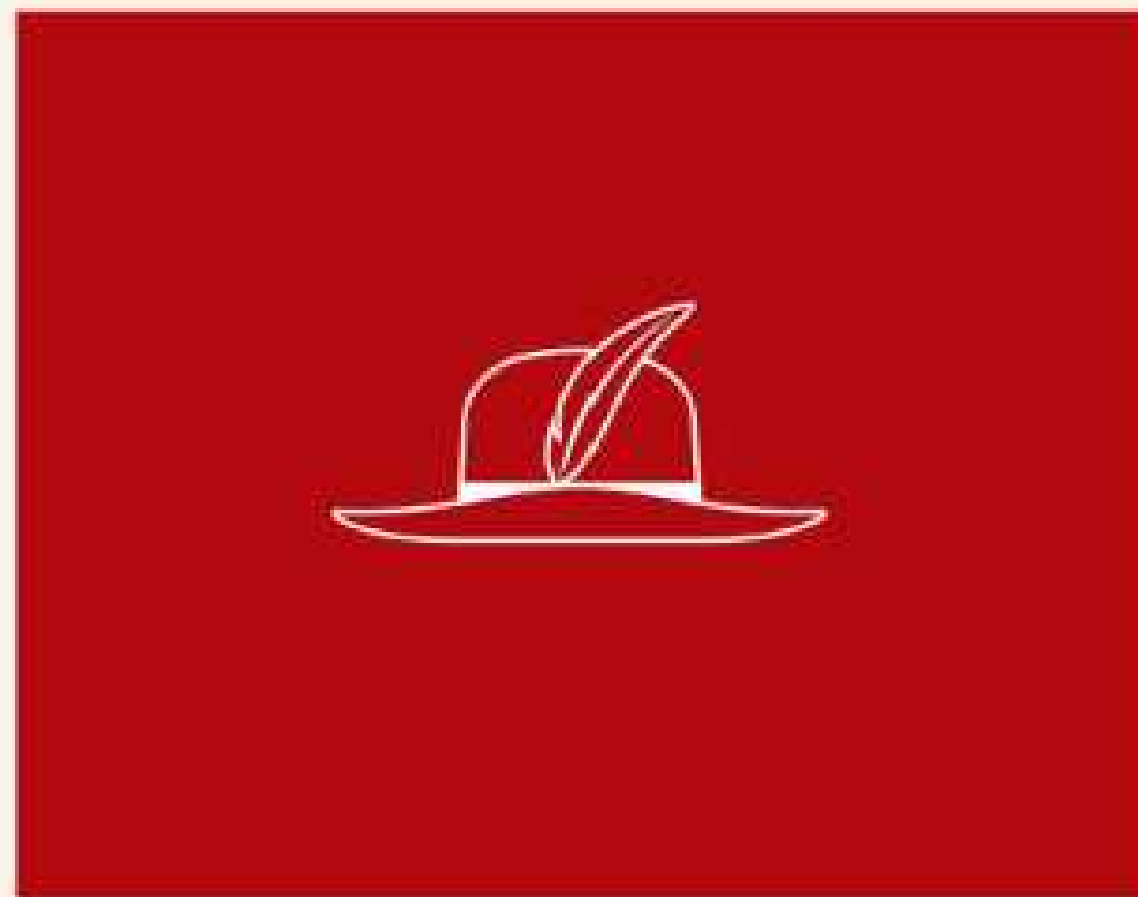




OUR NEIGHBORS



MAYAN TRAIN - JAGUAR PARK



FAENA DISTRICT



TULUM 101

DECLUB CONCEPTS



CASA SKY

Inspired by its most iconic feature: the elevated rooftop spa oasis. Suspended above the lush jungle, this space invites a sense of serenity, reflection, and openness, like retreating to the sky itself.

The name reflects a home that rises above the ordinary, offering a lifestyle where well-being, nature, and luxury coexist effortlessly.



MAIN ENTRANCE



FRONT FACADE



KITCHEN



KITCHEN

DECLUB CONCEPTS



POOL



MASTER BEDROOM

DECLUB CONCEPTS



MASTER BEDROOM

DECLUB CONCEPTS



BATHROOM

DECLUB CONCEPTS



ROOFTOP

DECLUB CONCEPTS



AERIAL VIEW

DECLUD CONCEPTS



ROOFTOP COLD PLUNGE AND JACUZZI

DECLUB CONCEPTS

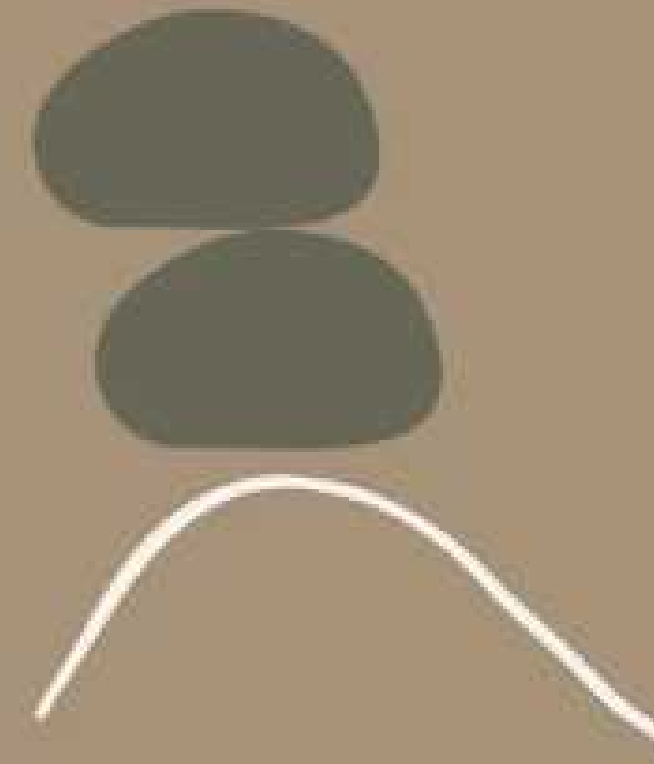


ROOFTOP WELLNESS

DECLUB CONCEPTS

2,388.51 FT²

4 BEDROOMS - 5 BATHS
OR
7 BEDROOMS - 8 BATHS

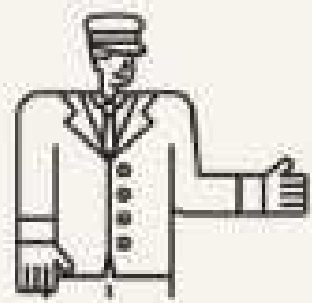


CASA SKY

IN DEELUM OUR PRIORITY
IS TO BUILD HOMES THAT
ELEVATE THE LIVES OF THE
PEOPLE WHO CHOOSE TO
LIVE IN THEM.

[SEE PRICE LIST](#)





24 HR BESPOKE CONCIERGE

RENTAL CARS IN RIVIERA MAYA
LUXURY YACHT EXPERIENCES
BACHELORETTE EXPERIENCES
PERSONAL SERVICES
PRIVATE DINING AND EVENTS
PRIVATE SERVICES

[LEARN MORE](#)



CREATE
MOMENTS
WITH US.